

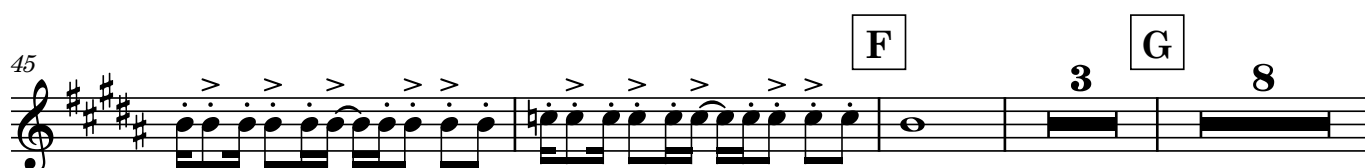
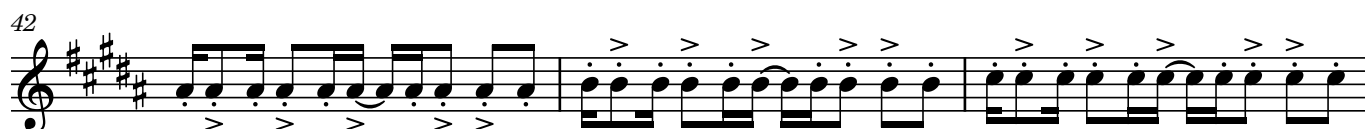
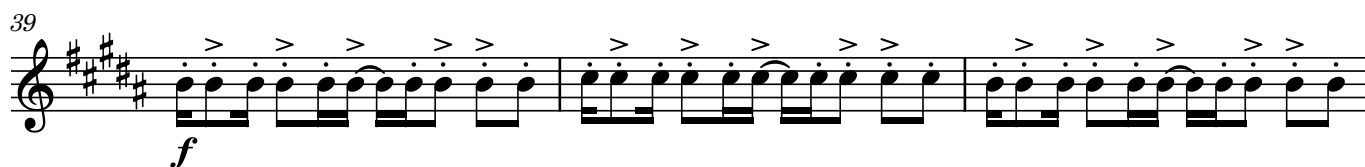
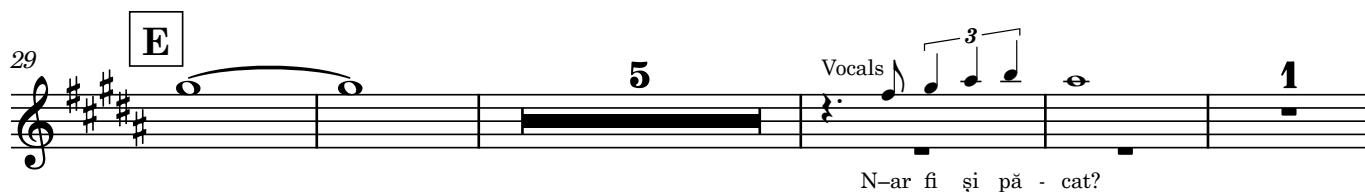
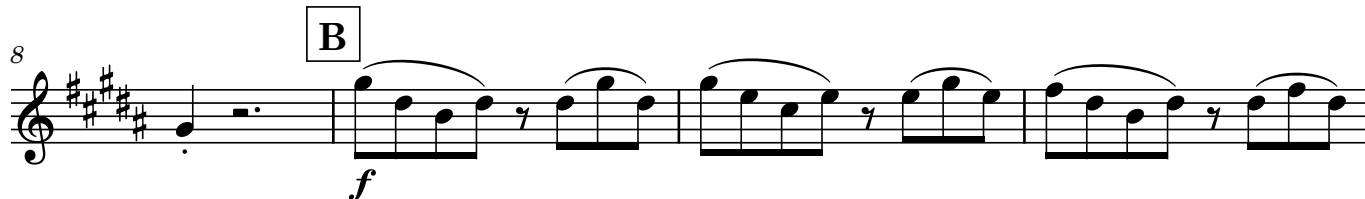
Cor Anglais

De ce să fie simplu dacă poate fi complicat?

Dan Byron

A $\text{♩} = 105$

Cor Anglais



Vocals

N-ar fi și pă - cat?

De ce să fie simplu dacă
poate fi complicat?

59

H

2

f

66

J

72

75

78

81

84

K

88

Musical score for Flute 1 and Cor Anglais, measures 59-88. The score is written in treble clef with a key signature of three sharps (F#, C#, G#). The tempo is marked '2' (half note). The dynamics are marked 'f' (forte) and 'K' (crescendo). The lyrics are 'De ce să fie simplu dacă poate fi complicat?'. The score includes various musical notations such as eighth notes, quarter notes, and rests, with some measures containing triplets. The Flute 1 part is indicated by a bracketed '1' above the staff. The Cor Anglais part is indicated by a bracketed '3' above the staff. The score is divided into measures 59 through 88, with measure numbers 59, 66, 72, 75, 78, 81, 84, and 88 marked at the beginning of their respective staves. Measure 59 starts with a half note rest, followed by a half note. Measure 66 starts with a half note, followed by a half note. Measure 72 starts with a half note, followed by a half note. Measure 75 starts with a half note, followed by a half note. Measure 78 starts with a half note, followed by a half note. Measure 81 starts with a half note, followed by a half note. Measure 84 starts with a half note, followed by a half note. Measure 88 starts with a half note, followed by a half note. The score ends with a double bar line and a fermata over the final note.

91

8

f

101

104

107

L

To Voice 7

Voice

Aaa

118

125

M

132